

GOVERNMENT COLLEGE FOR WOMEN, KOLAR-563101

INFRASTRUCTURE PLAN



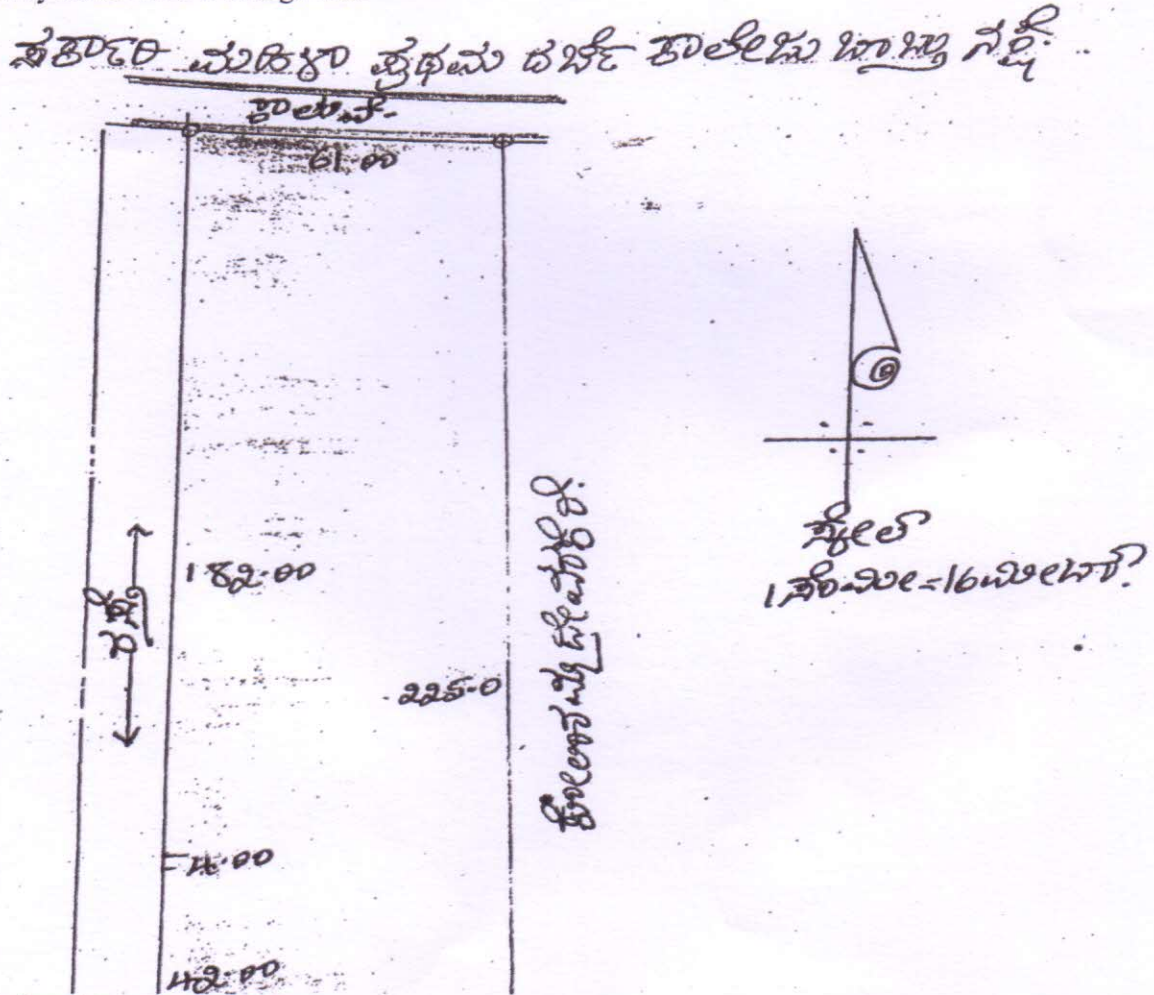
GEOGRAPHICAL LOCATION WITH CAMPUS MAP IN SCALE

The college has a sprawling pollution-free campus spread over 3 acres of land in the heart of Kolar District. Kolar is a historical place related to the Ganga Dynasty. It has an ideal geographical location with a proximity to the important cities of the region with Bangalore, the capital of the state. The college is located at 2 kms from the Kolar Railway Station, 20 kms from Bangarpet around 28 kms from Mulbagal and 25 kms from the Malur, so it is located at the middle of the District. The google earth 1 show the religious centers around the building create a spiritual ambience.

The Google aerial views of College Campus Part1 and Part 2 have been shown in Photo 2. The college is located 80 kms from Bengaluru, 75 kms from Chikkaballapur & 120 kms from Tirupathi. The nearest Airport is Devanahalli International Airport. The Scaled image of the college campus is shown in Photo 1. The google earth images show different college buildings, sports stadium, hostels and residential areas.

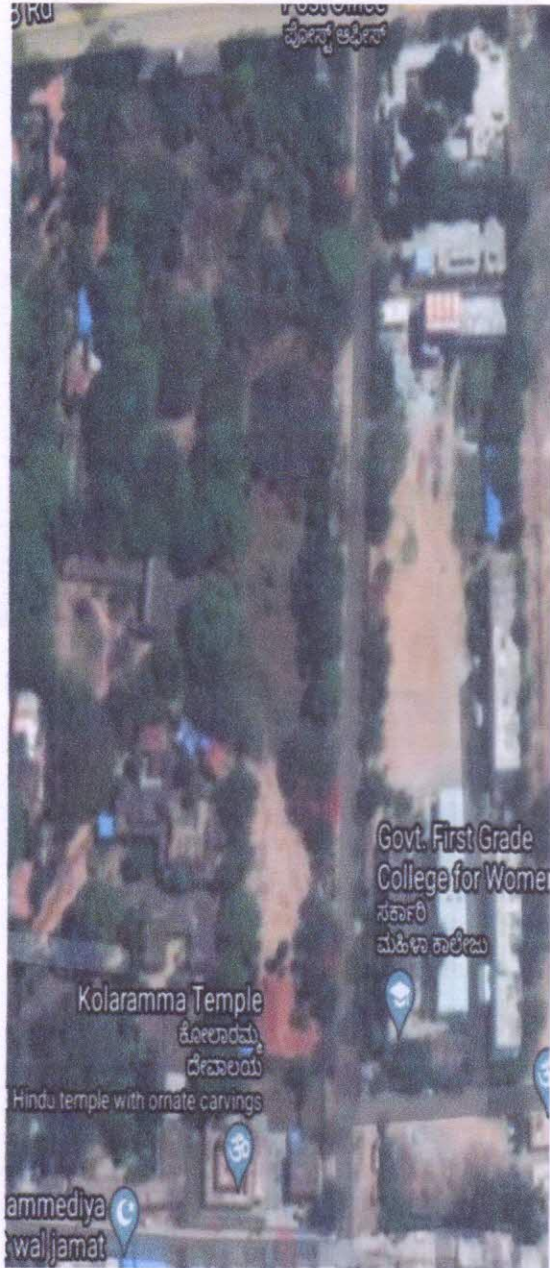
DESCRIPTION OF THE COLLEGE SITE

The site of the GCW is bounded to the North by the post-graduate center and Women's hostel, Kolaramma Lake to the East, A Gangamma Temple and other commercial establishments etc., to the South by a side road and to the west by the college main gate road. Below image shows the survey sketch of the college site.



All dimension are in meter (m).

SURVEY SKETCH OF COLLEGE CAMPUS



1



2

AERIEL VIEW OF COLLEGE CAMPUS (SOURCE GOOGLE EARTH)

